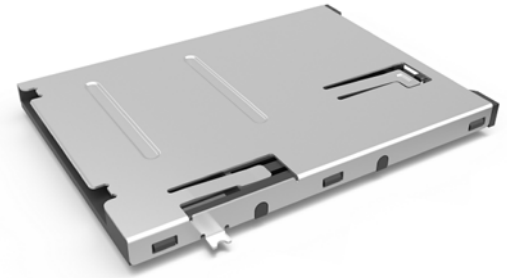
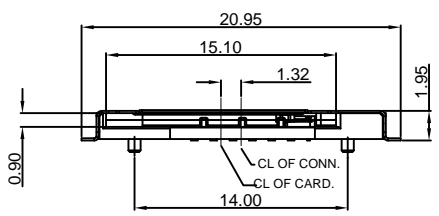
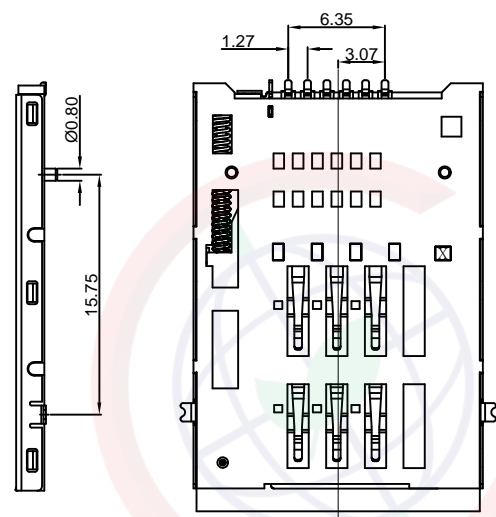
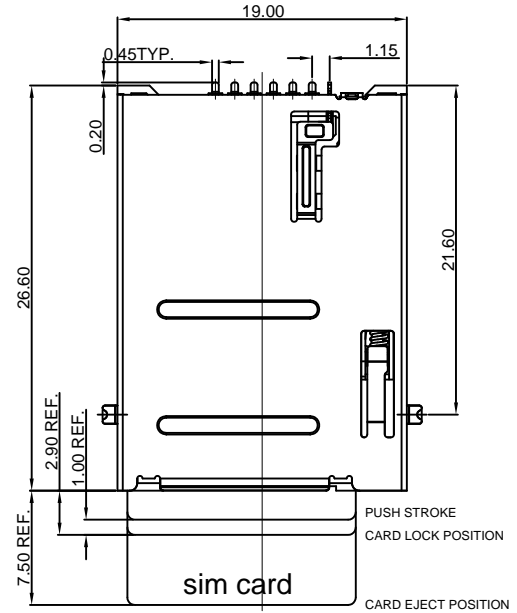


Dept	
Qty	
DC	1
ED	1
IE	1
ISO	1
PD	1
R&D	1
SD	1
QA	1
QC	1
QF	1

The information provided herein is from CONNELY Electronic Co., Ltd. and is confidential. Any disclosure to a party other than the recipient is prohibited. The intellectual properties and its rights contained herein, including but not limited to, trademarks, patents, copyrights, trade secrets, and technical know-how, are owned exclusively by CONNELY or its affiliates. Unauthorized use or reproduction of any part of this document is strictly prohibited. CONNELY may enforce its intellectual property rights at its own discretion, failures or delays to exercise such rights does not constitute a waiver of such rights.



(Series Image-Reference Only)

PIN ASSIGNMENTS

Connector terminal NO.	Pin NO.
Pin 1	VCC: PWR signal and GND
Pin 2	RST: Reset signal
Pin 3	CLK: Clocking signal
Pin 4	GND: PWR signal and GND
Pin 5	VPP: programming Voltage
Pin 6	I/O : serial date input/output

REV.	DESCRIPTION	DRAWN	CHECKED	APPROVED
A	NEW RELEASE	JLZ 10/07/14'		
B	DRAWING UPDATE	JLZ 11/04/16'	HZW 11/04/16'	
C	DRAWING UPDATE	JLZ 01/15/18'		
D	DRAWING UPDATE	JLZ 11/14/22'		

Notes:

- Material:
 - Housing: High Temperature, UL 94V-0 Color of Black.
 - Contacts: Copper Alloy.
 - Shell: Stainless Steel.
- Finish:
 - Contact Area: Gold Over Nickel.
 - Solder Area: Tin.
- Specifications:
 - Operating Temperature: -40° C~+85° C
 - Insulating Resistance: 100MΩ Min.
 - Contact Resistance: 100mΩ Max.
 - Withstanding Voltage: 500V AC 1min.
 - Current Rating: 0.5A.
- Product Number Code:

DS1138-04 - XX X X X X X X

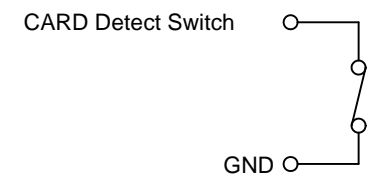
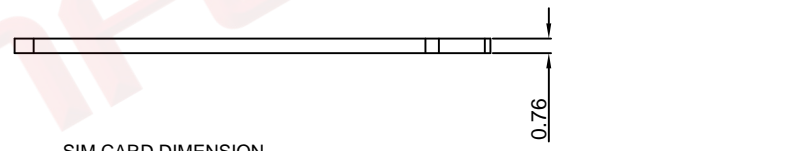
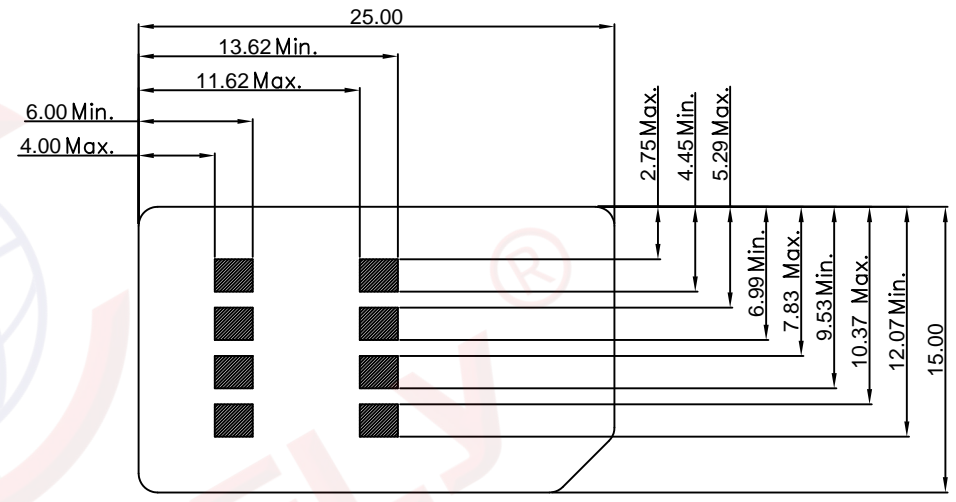
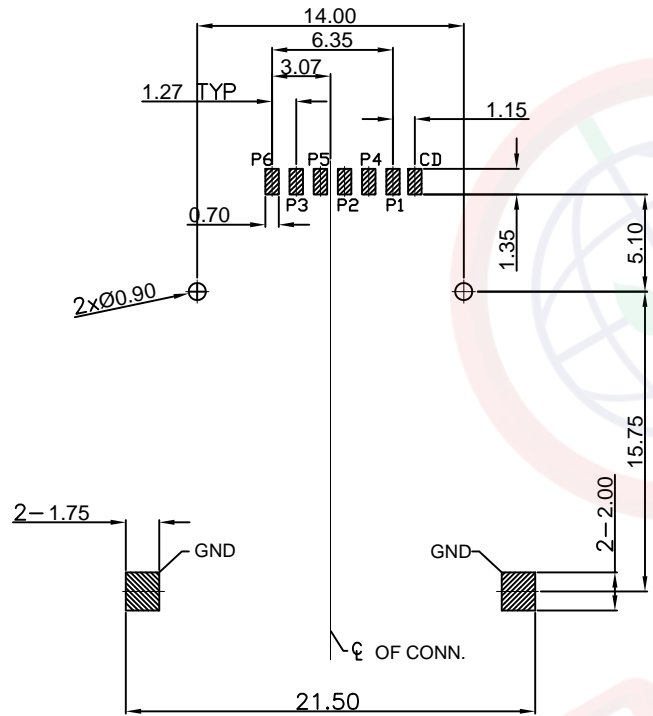
- Packing Type
R: Tape On Reel
- Shell Materials
S: Stainless
- Housing color
B: Black
- Contact Plating
4: Selective 3u" gold
- Mounting type
S: SMT type
- Connector type
S: Socket
- No. of contacts
06:6pin

GENERAL TOLERANCE		ANGLE TOLERANCE		PROJECTION		TITLE	Push Push Type SIM Card 6P
X.	±0.60	X.	±5°	UNITS	mm	SMT Type W/Post H=2.0mm	
.X	±0.38	.X	±3°	SHEET SIZE	A4	SERIES	DS1138-04 SERIES
.XX	±0.25	.XX	±2°	晨翔电子有限公司 CONNFLY ELECTRONIC CO. LTD			
DRAWING TYPE		CUSTOMER					
SCALE	1:1	SHEET	1 OF 2				
DRAWING NO.		C-DS1138-04-XXXX-D					

Dept	Qty
DC	1
ED	1
IE	1
ISO	1
PD	1
R&D	1
SD	1
QA	1
QC	1
QF	1

REV.	DESCRIPTION	DRAWN	CHECKED	APPROVED
A	NEW RELEASE	JLZ 10/07/14'		
B	DRAWING UPDATE	JLZ 11/04/16'	HZW 11/04/16'	
C	DRAWING UPDATE	JLZ 01/15/18'		
D	DRAWING UPDATE	JLZ 11/14/22'		

The information provided herein is from CONNPLY Electronic Co., Ltd. and is confidential. Any disclosure to a party other than the recipient is prohibited. The intellectual properties and its rights contained herein, including but not limited to, trademarks, patents, copyrights, trade secrets, and technical know-how, are owned exclusively by CONNPLY or its affiliates. Unauthorized use of this information, in any form or by any means, without the prior written permission of CONNPLY is strictly prohibited. CONNPLY may enforce its intellectual property rights at its own discretion, failures or delays to exercise such rights does not constitute a waiver of such rights.



Normal....SHORT
Inserting Card....OPEN

GENERAL TOLERANCE		ANGLE TOLERANCE	
X.	±0.60	X.	±5°
.X	±0.38	.X	±3°
.XX	±0.25	.XX	±2°
DRAWING TYPE		CUSTOMER	
SCALE	1:1	SHEET	2 OF 2
DRAWING NO.	C-DS1138-04-XXXXX-D		

PROJECTION		TITLE	Push Push Type SIM Card 6P
UNITS	mm		SMT Type W/Post H=2.0mm
SHEET SIZE	A4	SERIES	DS1138-04 SERIES

晨翔电子有限公司
 CONNPLY CONNPLY ELECTRONIC CO. LTD