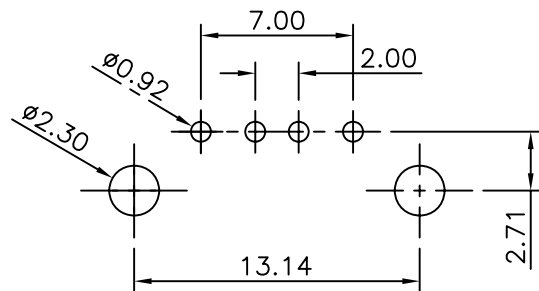
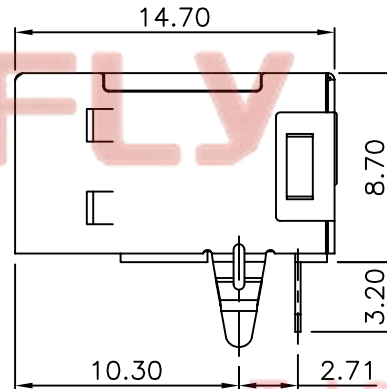
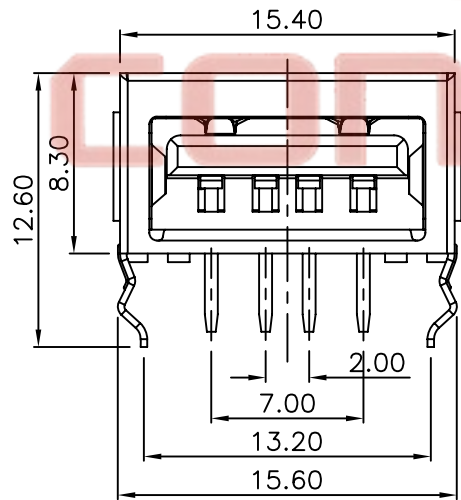
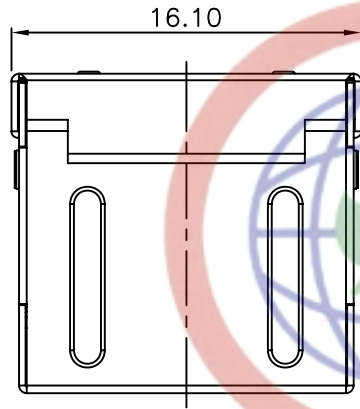


REV.	DESCRIPTION	DRAWN	CHECKED	APPROVED
A	NEW RELEASE	LJC 12/20/07'		



RECOMMEND PCB LAYOUT  
(TOLERANCE=±0.05)

NOTES:

1. SPECIFICATIONS:

- 1.0 CONTACT RESISTANCE: 30mΩ max.
- 1.1 INSULATOR RESISTANCE: 1000MΩ min.AT DC 500V.
- 1.2 CURRENT RATING: 1.5A.
- 1.3 VOLTAGE RATING: 30V AC/DC.
- 1.4 DIELECTRIC STRENGTH: AC 500V FOR 1 Minute.

2. MATERIALS:

- 2.0 HOUSING: PBT+30% GLASS FIBER(UL 94-0).
- 2.1 CONTACT: COPPER ALLOY
- 2.2 SHELL: COPPER ALLOY.

3. PRODUCT NUMBER CODE:

DS1095-04-X X X X

CONTACT PLATING

- 0: Selective gold flash
- 03: Selective gold 3u"
- 30: Selective gold 30u"

MOUNTING TYPE

- R: R/A

SHELL PLATING:

- N: Nickel
- 6: Tin

COLOR OF HOUSING:

- W: White
- B: Black

SERIES No.

DS1095-04

Tel:86-574-63508787  
 Fax:86-574-63510817  
 E-mail:sale@zhenqin.com.cn  
 Http://www.connfly.com

GENERAL TOLERANCE		ANGLE TOLERANCE		PROJECTION		TITLE	USB Female A TYPE	
X.	±0.60	X.	±5°	UNITS	mm		R/A Anti-EMI series	
.X	±0.38	.X	±3°	SHEET SIZE	A4	SERIES	DS1095-04 SERIES	
.XX	±0.25	.XX	±2°			晨翔电子有限公司 <b>CONNFLY CONNFLY ELECTRONIC CO. LTD</b>		
DRAWING TYPE		CUSTOMER						
SCALE		1:1		SHEET 1 OF 1				
DRAWING NO.		C-DS1095-04-XXXX						