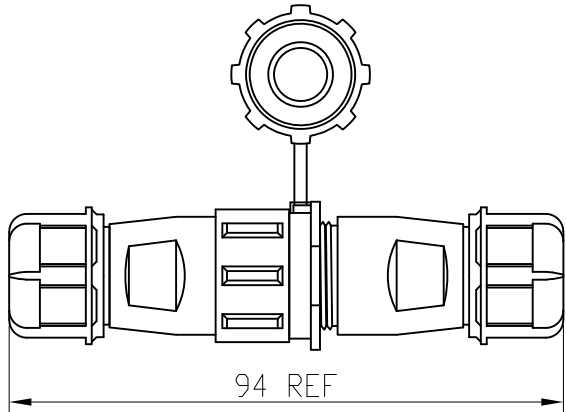


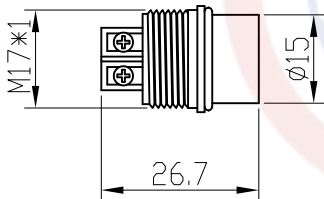
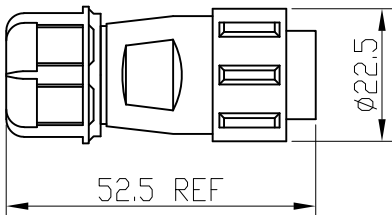
Dept
Qty
DC 1
ED 1
IE 1
ISO 1
PD 1
R&D 1
SD 1
QA 1
QC 1
QE 1

CONNFLY Electronic Co., Ltd. and its confidential. Any disclosure to a party other than the recipient is prohibited. The intellectual properties and its rights of CONNFLY Electronic Co., Ltd. are reserved. All intellectual properties provided herein are for reference purpose only and does not constitute authorization of its use in any format or manner. CONNFLY may enforce its intellectual property rights at its own discretion; failures or delays to exercise such rights does not constitute a waiver of such rights.

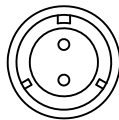
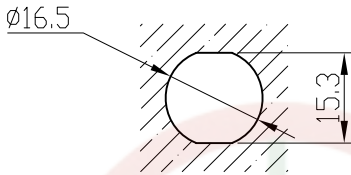
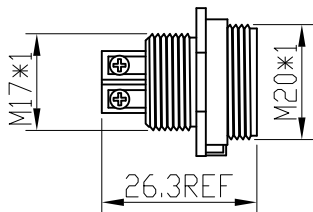
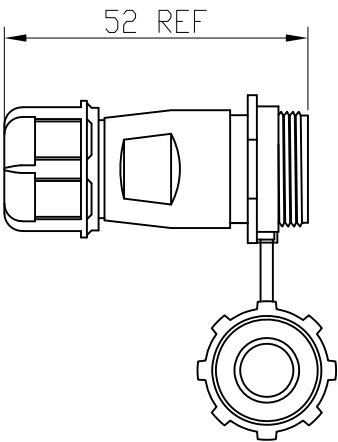
Assembly



Male



Famale



Note:

- 1.Rated voltage:350V
- 2.Rated current:5A-10A
- 3.Insulation resistance:2000 Ω
- 4.Withstand voltage:1500V
- 5.Operating temperature: -30℃ to +90℃
- 6.Wiring method: Screw

Materials:

- 1.Shell material: PA66
- 2.Insulation material: PPS
- High temperature resistance 260℃
- 3.Contact material: Copper gold plating

Product Number Code:
DS1110-75-XXXXXX

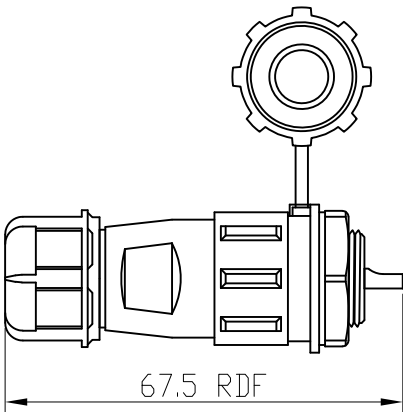
Install Type
A:A Type
Cable diameter
1: 7-10
Contact Plating
8:Gold flash
Color of nut
U:Blue
Color of housing
B:Black
No. of Contacts
2 3 4

GENERAL TOLERANCE		ANGLE TOLERANCE	
X.	±0.60	X.	±5°
.X	±0.38	.X	±3°
.XX	±0.25	.XX	±2°
DRAWING TYPE		CUSTOMER	
SCALE		1:1	SHEET 1 OF 3
DRAWING NO.		C-DS1110-75-XXXXXX-A	

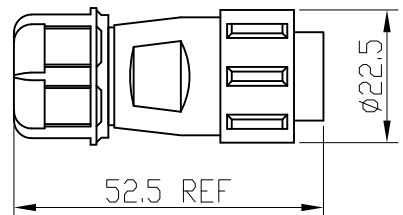
PROJECTION	TITLE	Ø17 waterproof aviation plug
UNITS	mm	docking type(Screw type)
SHEET SIZE	SERIES	A4 DS1110-75 Series

[illegible]

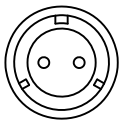
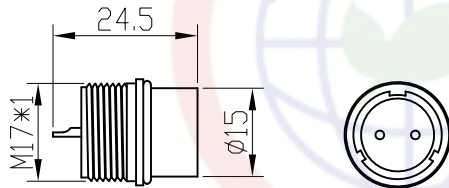
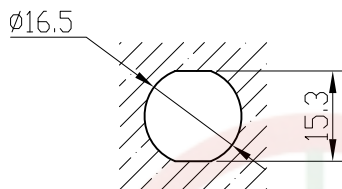
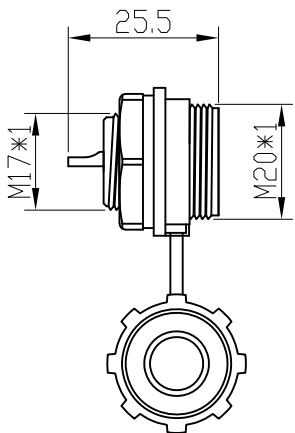
Assembly



Male



Female



Note:


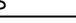
1. Rated voltage: 350V
2. Rated current: 5A-10A
3. Insulation resistance: 2000 Ω
4. Withstand voltage: 1500V
5. Operating temperature: -30°C to $+90^{\circ}\text{C}$
6. Wiring method: Screw

Materials:

- 1.Shell material: PA66
2. Insulation material: PPS
High temperature resistance 260°C
- 3.Contact material: Copper gold plating

Product Number Code:
DS1110-75-X X X X X X

- Install Type
B:B Type
- Cable diameter
1:Ø7-10
- Contact Plating
8:Gold flash
- Color of nut
U:Blue
- Color of housing
B:Black
- No. of Contacts
2 3 4

GENERAL TOLERANCE		ANGLE TOLERANCE		PROJECTION		TITLE	Ø17 waterproof aviation plug
X.	±0.60	X.	±5°	UNITS	mm		rear nut type(Screw type)
.X	±0.38	.X	±3°	SHEET SIZE	A4	SERIES	DS1110-75 Series
.XX	±0.25	.XX	±2°	 晨翔电子有限公司 CONNFLY CONNFLY ELECTRONIC CO. LTD			
DRAWING TYPE		CUSTOMER					
SCALE	1:1	SHEET	2 OF 3				
DRAWING NO.	C-DS1110-75-XXXXXX-A						

