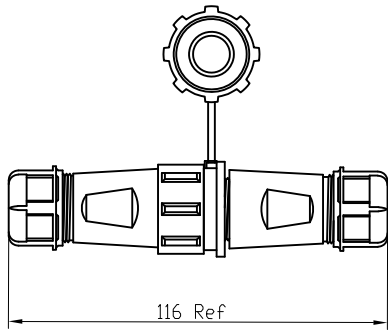
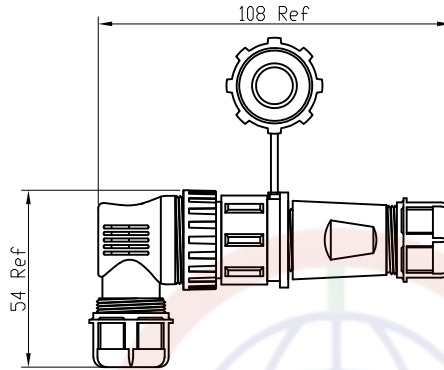


The information provided herein is from CONNPLY Electronic Co., Ltd. and is confidential. Any disclosure to a party other than the recipient is prohibited. The intellectual properties and its rights are reserved by CONNPLY. All intellectual properties provided herein are for reference purposes only and does not constitute authorization of its use in any format or manner. CONNPLY may enforce its intellectual property rights at its own discretion; failures or delays to exercise such rights does not constitute a waiver of such rights.

Assembly

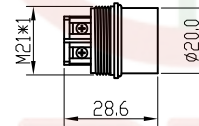
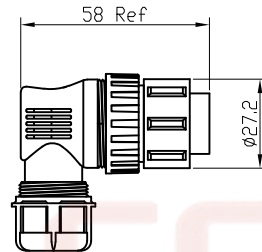
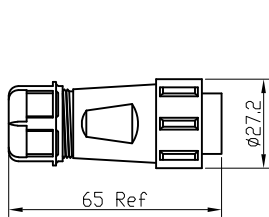


In-line series

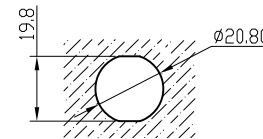
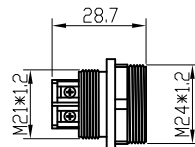
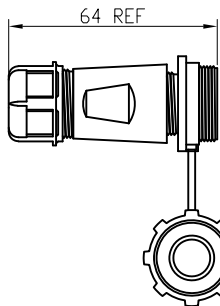


In-line elbow Angle

Male



Famale



Suggested Panel Opening

REV.	DESCRIPTION	DRAWN	CHECKED	APPROVED
A	NEW RELEASE	WPY 10/08/24'		

Note:

1. Rated voltage: 300V/350V/400V
2. Rated current: 5A/10A/25A
3. Insulation resistance: 2000M Ω
4. Withstand voltage: 1200V/1500V
5. Operating temperature: -30 $^{\circ}$ C to +90 $^{\circ}$ C
6. Wiring method: Screw



Materials:

1. Shell material: PA66
2. Insulation material: PPS
- High temperature resistance 260 $^{\circ}$ C
3. Contact material: Copper gold plating

Product Number Code:

DS1110-76-X X X X X X X

- Mounting type
R: Elbow V: straight connector
- Cable diameter:
1: 4-7mm 2: 5-9mm 3: 8-12mm
- Install Type
A: A Type
- Contact Plating
8: Gold flash
- Color of nut
U: Blue
- Color of housing
B: Black
- No. of Contacts
2 3 4 5 6 7

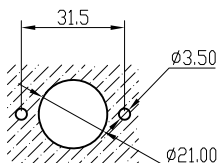
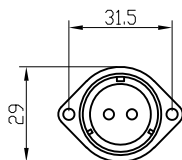
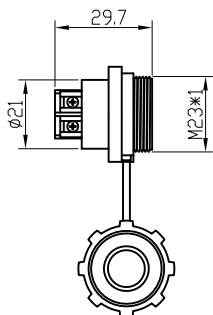
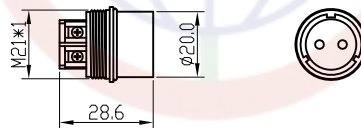
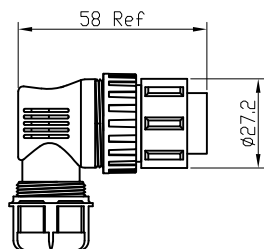
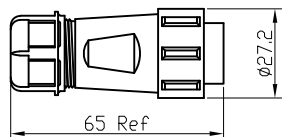
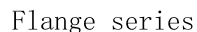
GENERAL TOLERANCE		ANGLE TOLERANCE		PROJECTION		TITLE	ø21 waterproof aviation plug docking type(Screw type)			
X.	±0.60	X.	±5°	UNITS	mm	<div>晨翔电子有限公司 CONNFLY CONNFLY ELECTRONIC CO. LTD</div>				
.X	±0.38	.X	±3°	SHEET SIZE	A4				SERIES	DS1110-76 Series
.XX	±0.25	.XX	±2°							
DRAWING TYPE		CUSTOMER								
SCALE		1:1	SHEET	1 OF 5						
DRAWING NO.		C-DS1110-76-XXXXXXX-A								



晨翔电子有限公司
CONNPLY CONNPLY ELECTRONIC CO. LTD

The information provided herein is from CONNELLY Electronic Co., Ltd. and is confidential. Any disclosure to a party other than the recipient is prohibited. The intellectual properties and its rights contained herein, including but not limited to, trademarks, patents, copyrights, trade secrets, and technical know-how, are owned exclusively by CONNELLY or its affiliates. Unauthorised use or modification is strictly prohibited without prior written permission from CONNELLY. The recipient is provided herein for reference purposes only and does not constitute authorisation of its use in any format or manner. CONNELLY may enforce its intellectual property rights at its own discretion, failure or delays to exercise such rights does not constitute waiver of such rights.

Male



Suggested Panel Opening

Note:

1. Rated voltage: 300V/350V/400V
2. Rated current: 5A/10A/25A
3. Insulation resistance: 2000MΩ
4. Withstand voltage: 1200V/1500V
5. Operating temperature: -30℃ to +90℃
6. Wiring method: Screw


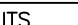
Materials:

- 1.Shell material: PA66
- 2.Insulation material: PPS
High temperature resistance 260℃
- 3.Contact material: Copper gold plating

Product Number Code:

DS1110-76-X X X X X X X

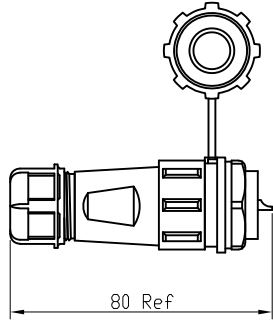
- Mounting type
R:Elbow V:straight connector
- Cable diameter:
1:4-7mm 2:5-9mm 3:8-12mm
- Install Type
B:B Type
- Contact Plating
8:Gold flash
- Color of nut
U:Blue
- Color of housing
B:Black
- No. of Contacts
2 3 4 5 6 7

GENERAL TOLERANCE		ANGLE TOLERANCE		PROJECTION		TITLE	ø21 waterproof aviation plug
X.	±0.60	X.	±5°	UNITS	mm		flange type(Screw type)
.X	±0.38	.X	±3°	SHEET SIZE	A4	SERIES	DS1110-76 Series
.XX	±0.25	.XX	±2°	 晨翔电子有限公司 CONNFLY CONNFLY ELECTRONIC CO. LTD			
DRAWING TYPE		CUSTOMER					
SCALE	1:1	SHEET	2 OF 5				
DRAWING NO.	C-DS1110-76-XXXXXX-A						

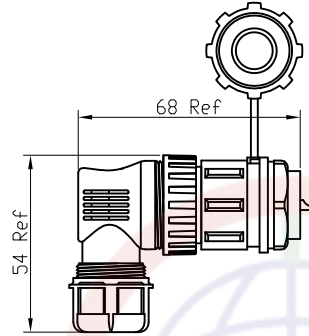
Dept
Qty
DC 1
ED 1
IE 1
ISO 1
PD 1
R&D 1
SD 1
QA 1
QC 1
QE 1

CONNFLY Electronic Co., Ltd. and its subsidiaries are not responsible for any damage or loss of property or information, in any format or manner, caused by the use of this drawing. The information provided herein is from the company's internal documents and is confidential. Any disclosure to a party other than the recipient is prohibited. The intellectual properties and its rights of the company are reserved. All intellectual properties provided herein are for reference purposes only and does not constitute authorization of its use.

Assembly

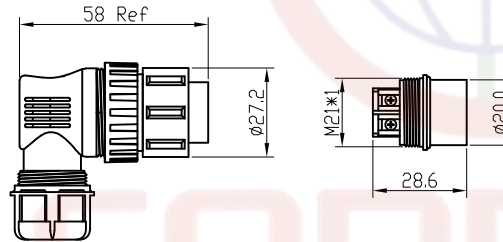
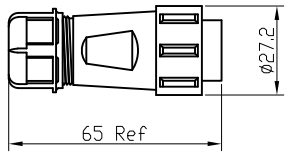


Rear nut series

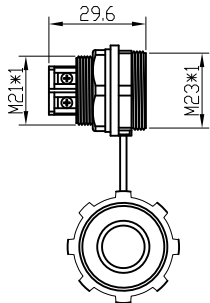


Rear nut elbow series

Male



Famale



Suggested Panel Opening

REV.	DESCRIPTION	DRAWN	CHECKED	APPROVED
A	NEW RELEASE	WPY 10/08/24'		

Note:

1. Rated voltage: 300V/350V/400V
2. Rated current: 5A/10A/25A
3. Insulation resistance: 2000M Ω
4. Withstand voltage: 1200V/1500V
5. Operating temperature: -30 $^{\circ}$ C to +90 $^{\circ}$ C
6. Wiring method: Screw


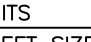
Materials:

1. Shell material: PA66
2. Insulation material: PPS
3. Contact material: Copper gold plating

Product Number Code:

DS1110-76-X X X X X X X

- Mounting type
R: Elbow V: straight connector
- Cable diameter:
1: 4-7mm 2: 5-9mm 3: 8-12mm
- Install Type
C: C Type
- Contact Plating
8: Gold flash
- Color of nut
U: Blue
- Color of housing
B: Black
- No. of Contacts
2 3 4 5 6 7

GENERAL TOLERANCE		ANGLE TOLERANCE		PROJECTION		TITLE	ø21 waterproof aviation plug	
X.	±0.60	X.	±5°	UNITS	mm	rear nut type(Screw type)		
.X	±0.38	.X	±3°	SHEET SIZE	A4	SERIES	DS1110-76 Series	
.XX	±0.25	.XX	±2°	<div><div>晨翔电子有限公司</div><div>CONNFLY CONNFLY ELECTRONIC CO. LTD</div></div>				
DRAWING TYPE		CUSTOMER						
SCALE	1:1	SHEET	3 OF 5					
DRAWING NO.	C-DS1110-76-XXXXXXX-A							

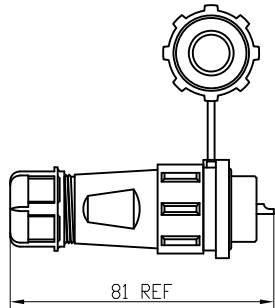


晨翔电子有限公司
CONNFLY CONNFLY ELECTRONIC CO. LTD

Dept
Qty
DC 1
ED 1
IE 1
ISO 1
PD 1
R&D 1
SD 1
QA 1
QC 1
QE 1

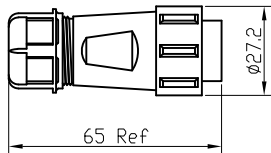
CONNFLY Electronic Co., Ltd. and its subsidiaries. Any disclosure to a party other than the recipient is prohibited. The intellectual properties and its rights of the recipient are not transferred. All intellectual properties provided herein are for reference purposes only and does not constitute authorization of its use in any format or manner. CONNFLY may enforce its intellectual property rights at its own discretion; failures or delays to exercise such rights does not constitute a waiver of such rights.

Assembly

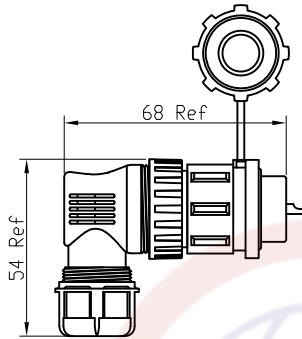
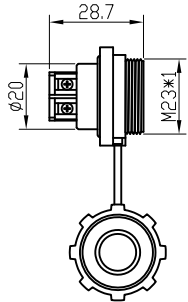


Square series

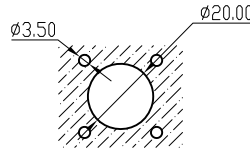
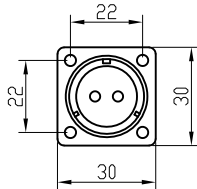
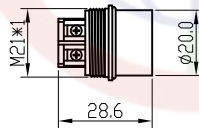
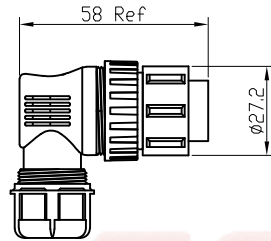
Male



Famale



Square elbow series



Suggested Panel Opening

REV.	DESCRIPTION	DRAWN	CHECKED	APPROVED
A	NEW RELEASE	WPY 10/08/24'		

Note:

1. Rated voltage:300V/350V/400V
2. Rated current:5A/10A/25A
3. Insulation resistance:2000MΩ
4. Withstand voltage:1200V/1500V
5. Operating temperature: -30℃ to +90℃
6. Wiring method: Screw

Materials:

1. Shell material: PA66
2. Insulation material: PPS
- High temperature resistance 260℃
3. Contact material: Copper gold plating

Product Number Code:

DS1110-76-X X X X X X X

- Mounting type
R:Elbow V:straight connector
- Cable diameter:
1:4-7mm 2:5-9mm 3:8-12mm
- Install Type
D:D Type
- Contact Plating
8:Gold flash
- Color of nut
U:Blue
- Color of housing
B:Black
- No. of Contacts
2 3 4 5 6 7

GENERAL TOLERANCE		ANGLE TOLERANCE	
X.	±0.60	X.	±5°
.X	±0.38	.X	±3°
.XX	±0.25	.XX	±2°

DRAWING TYPE	CUSTOMER		
SCALE	1:1	SHEET	4 OF 5
DRAWING NO.	C-DS1110-76-XXXXXXX-A		

PROJECTION		TITLE	Ø21 waterproof aviation plug square type(Screw type)
UNITS	mm		
SHEET SIZE	A4	SERIES	DS1110-76 Series



晨翔电子有限公司
CONNFLY CONNFLY ELECTRONIC CO. LTD

Dept

Qty

DC

1

ED

1

IE

1

ISO

1

PD

1

R&D

1

SD

1

QA

1

QC

1

QE

1

1

2

3

4

5

6

7

8

REV.

DESCRIPTION

DRAWN

CHECKED

APPROVED

A

NEW RELEASE

WPY 10/08/24'

Solder contact arrangement and spec

No.of Contacts	2	3	4	5	6	7
Male contact face view						
Rated current (A)	25A	25A	25A	10A	5A	5A
Contact diameter	Ø2.8×2	Ø2.8×3	Ø2.8×4	Ø1.8×5	Ø1.8×6	Ø1.0×7
Wiring method	Screw					
Working Voltage (AC.V)	400V	400V	400V	350V	300V	300V
Test voltage(AC.V)	1500V	1500V	1500V	1500V	1200V	1200V
Contact resistance(mΩ)	1mΩ	1mΩ	1mΩ	2mΩ	5mΩ	5mΩ
Insulation resistance(MΩ)	2000MΩ	2000MΩ	2000MΩ	2000MΩ	2000MΩ	2000MΩ
Wire Size (mm²/AWG)	≤4/11	≤4/11	≤4/11	≤2.5/13	≤1.5/16	≤1.5/16

GENERAL TOLERANCE

ANGLE TOLERANCE

PROJECTION

TITLE

Ø21 Waterproof aviation plug screw series

X. ±0.60

X. ±5°

UNITS

mm

SHEET SIZE

A4

SERIES

DS1110-76 Series

DRAWING TYPE

CUSTOMER

SCALE

1:1

SHEET

1 OF 1

DRAWING NO.

C-DS1110-76-XXXXXXX-A

晨翔电子有限公司

CONNFLY CONNFLY ELECTRONIC CO. LTD